

SFJAZZ

# RENT THE SFJAZZ CENTER

CONFERENCES

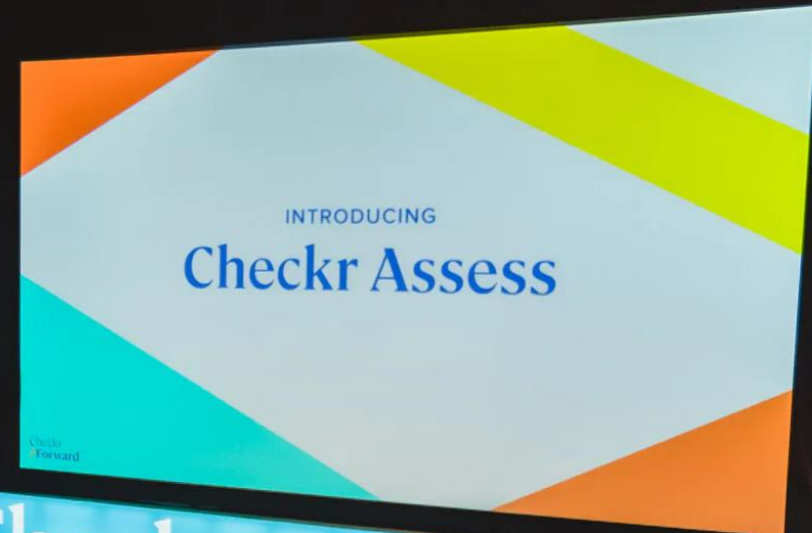
MEETINGS

STREAMING/RECORDING

CONCERTS

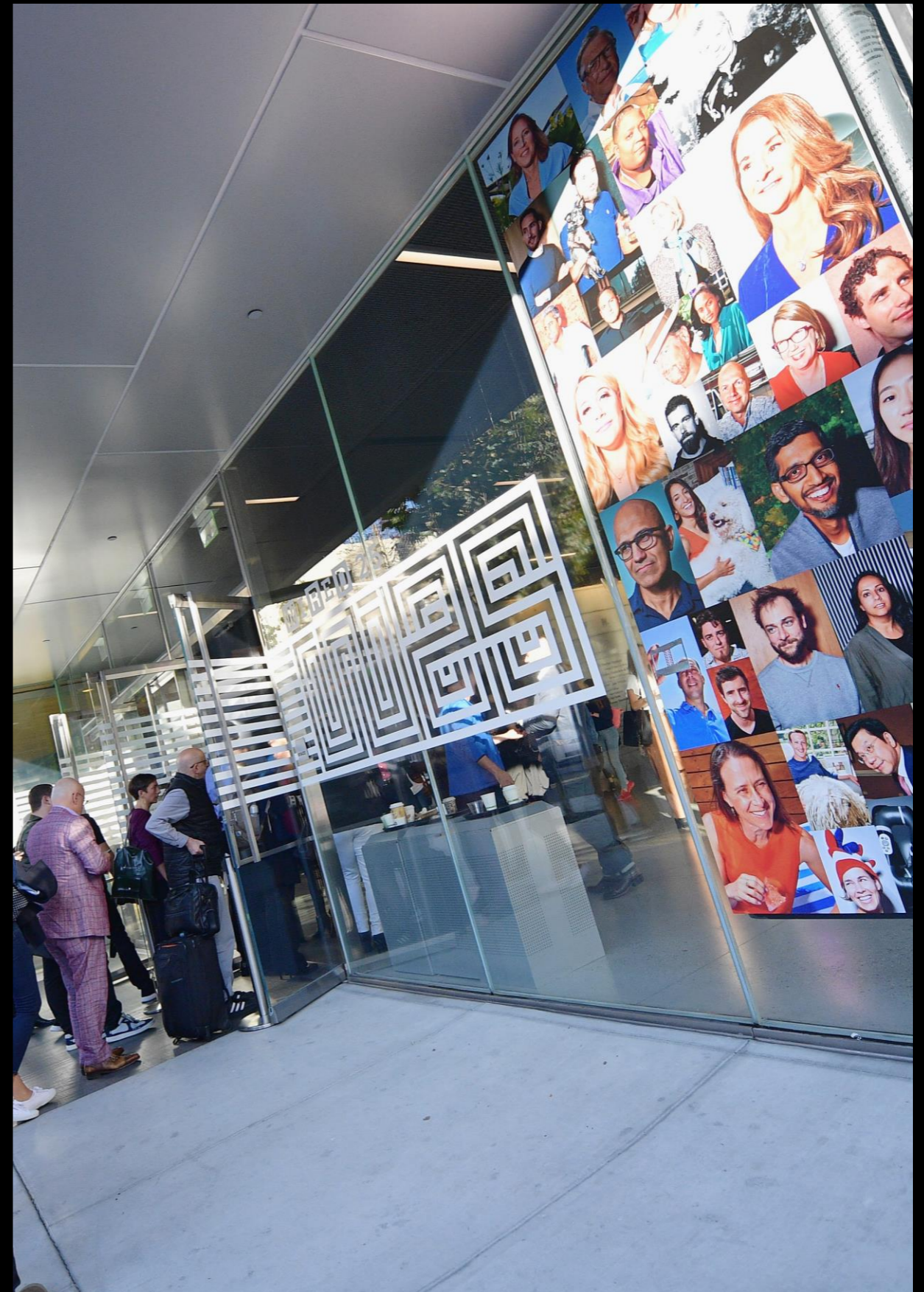
GALAS

RECEPTIONS



# CONTENTS

3	Introduction
4	About SFJAZZ
5-8	Capacities
9	Streaming/Recording
10	Food & Beverage
11-12	Floor Plans
13-14	Miner Seating Charts
15-16	Technical Specifications - Miner Auditorium
18	Technical Specifications - Joe Henderson Lab & Lobbies
19	Backline
20	Power
21	Internet
22	Load-in & Parking
23	Booking Process
24	SFJAZZ High School All-Stars
25	Film & Photography Production Location
26	Location & Contact



# MODERN SPACE THE LATEST TECHNOLOGY PERFECT SAN FRANCISCO LOCATION

Located in central Hayes Valley, The SFJAZZ Center is one of San Francisco's most exciting event venues. Featuring a dynamic and flexible state-of-the-art auditorium, stylish lobbies, a second, smaller performance space, break-out rooms, and the latest and fastest streaming technologies, the SFJAZZ Center is your perfect venue for conferences, meetings, receptions and performances.



# ABOUT SFJAZZ

SFJAZZ is the world leader in jazz presentation and education.

The organization has steadily built its legacy since its start in 1983, becoming a bedrock institution of the San Francisco arts community. In addition to presenting the finest musicians from around the world, SFJAZZ supports a vibrant local music scene and nurtures aspiring artists with diverse education programs and performing ensembles.

In January 2013, SFJAZZ took the most audacious step in its evolution, opening the 36,000 square foot, \$64 million SFJAZZ Center on the corner of Fell and Franklin streets in the heart of San Francisco's cultural corridor. You'll see that what makes the SFJAZZ Center a state-of-the-art concert facility also makes it the perfect venue for your event.

The SFJAZZ Center was designed by award-winning San Francisco architect Mark Cavagnero, who worked with acoustician Sam Berkow and theater designer Len Auerbach to create a main performance space with the acoustic qualities of a great concert hall, the relaxed intimacy of a jazz club, and the technological advancements to record, stream, and archive HD events. That's the Robert N. Miner Auditorium, a flexible, scalable venue that seats up to 700 people with superb sightlines and pristine acoustics.

The 100-seat Joe Henderson Lab is the SFJAZZ Center's street-level performance and rehearsal space, named for the late, great saxophonist and San Francisco resident. This space is a great choice for smaller events, or as a breakout space for events held in Miner Auditorium.



# CAPACITIES

## ROBERT N. MINER AUDITORIUM

Stunning, modern, intimate, and scalable from 100-700 people. Features a custom Meyer sound system, world-class lighting, hi-definition video projection, and an expandable stage. Rental of the Miner Auditorium includes the Artistic Wing, which is composed of a green room, four dressing rooms, a private lounge, and a private patio.

### Suggested Use:

Conferences, Performances, Screenings, and Lectures

**Square Footage:** 6,686, with balcony 8,626

**Seated:** 100-700



# CAPACITIES

## JOE HENDERSON LAB

Dramatic and unique with glass walls for natural and ambient light. Open floor plan accommodates up to 100 seated. Custom Meyer sound system, stage lighting, and video projection. Both opaque and translucent window shades are available for use.

**Suggested Use:** Board Meetings, Concerts, VIP Receptions.

**Square Footage:** 769 without stage

**Seated:** 100 theater

**Standing:** 100



# CAPACITIES

## FIRST FLOOR LOBBY

The sweeping main entrance of the SFJAZZ Center welcomes guests with floor-to-ceiling glass walls in an open floor plan. The First Floor Lobby has direct access to B-Side Restaurant, Miner Auditorium, and the Joe Henderson Lab.

**Suggested Use:**

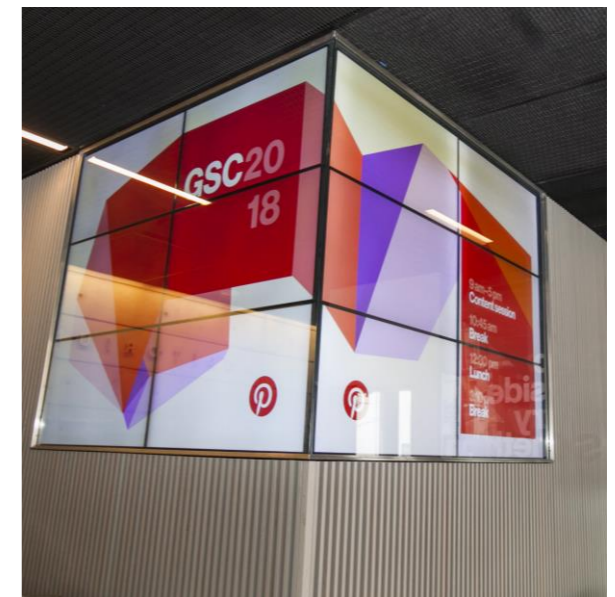
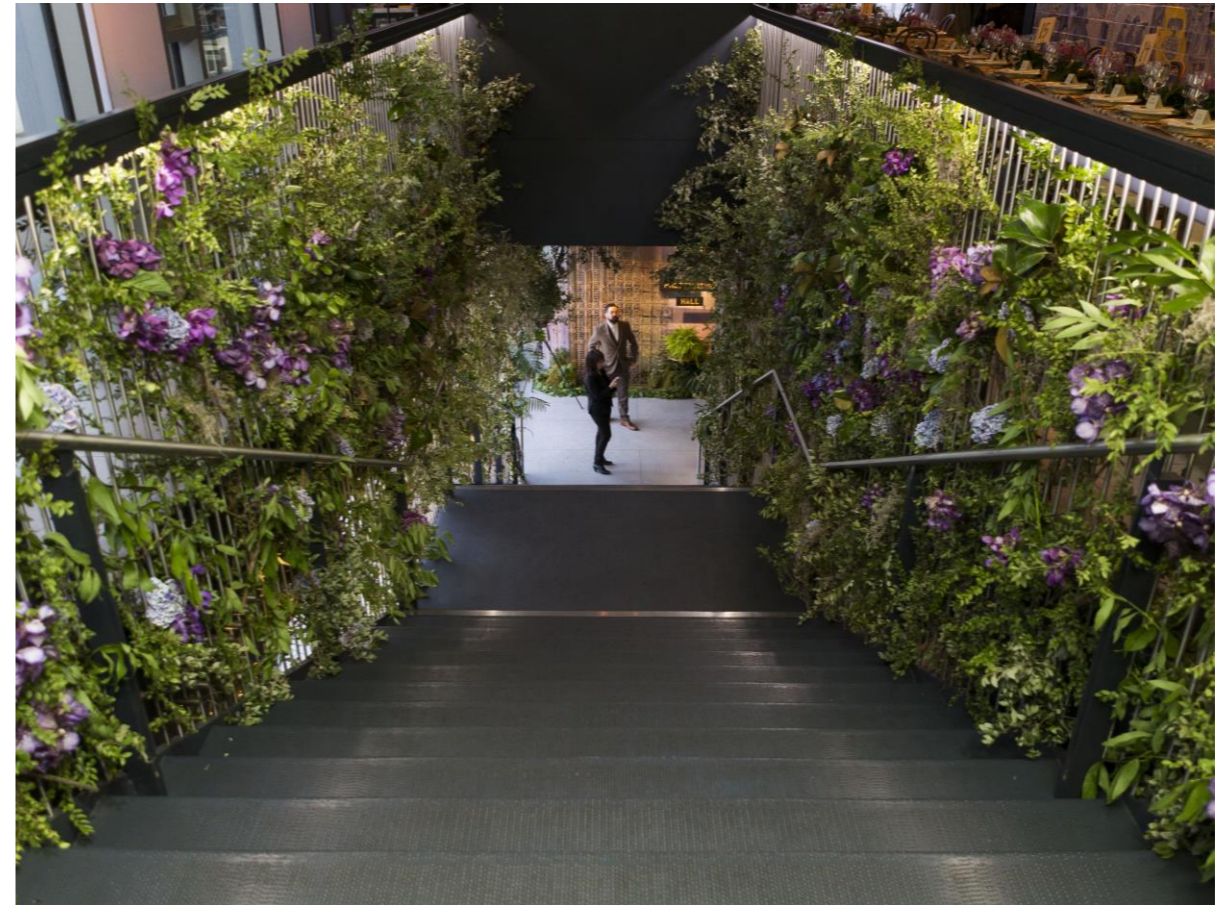
Receptions, Exhibition Space, Breakfast/Lunch Service

**Square Footage:**

1,815

**Standing:**

150



# CAPACITIES

## SECOND FLOOR LOBBY

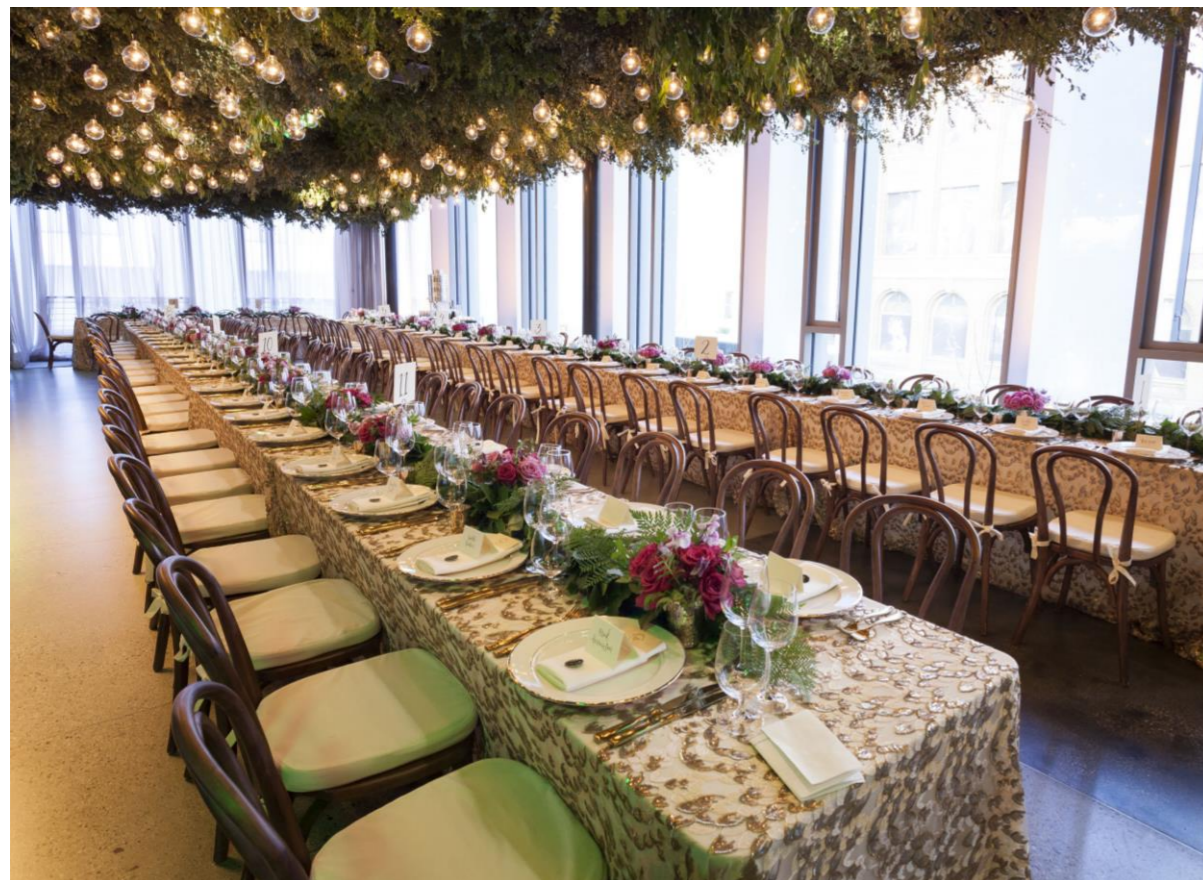
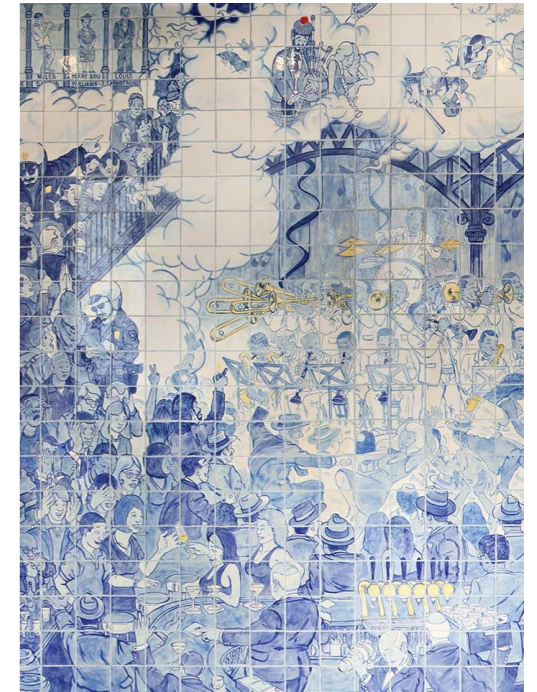
Our Second Floor Lobby runs the entire width of the SFJAZZ Center along Franklin Street. This stylish reception space features floor-to-ceiling glass on three sides, outdoor terraces, the spectacular SFJAZZ Center murals, and built-in bars at both ends.

**Suggested Use:** Receptions, Seated Dinners

**Square Footage:** 1,770

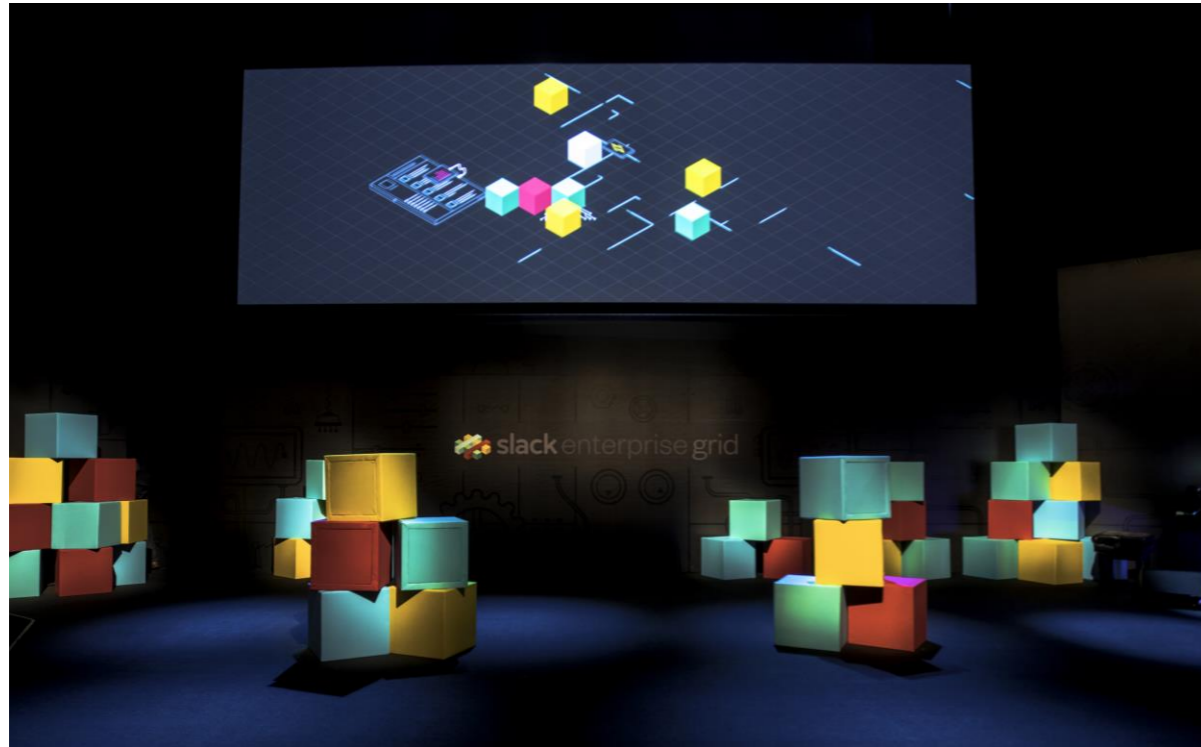
**Seated:** 100

**Standing:** 250





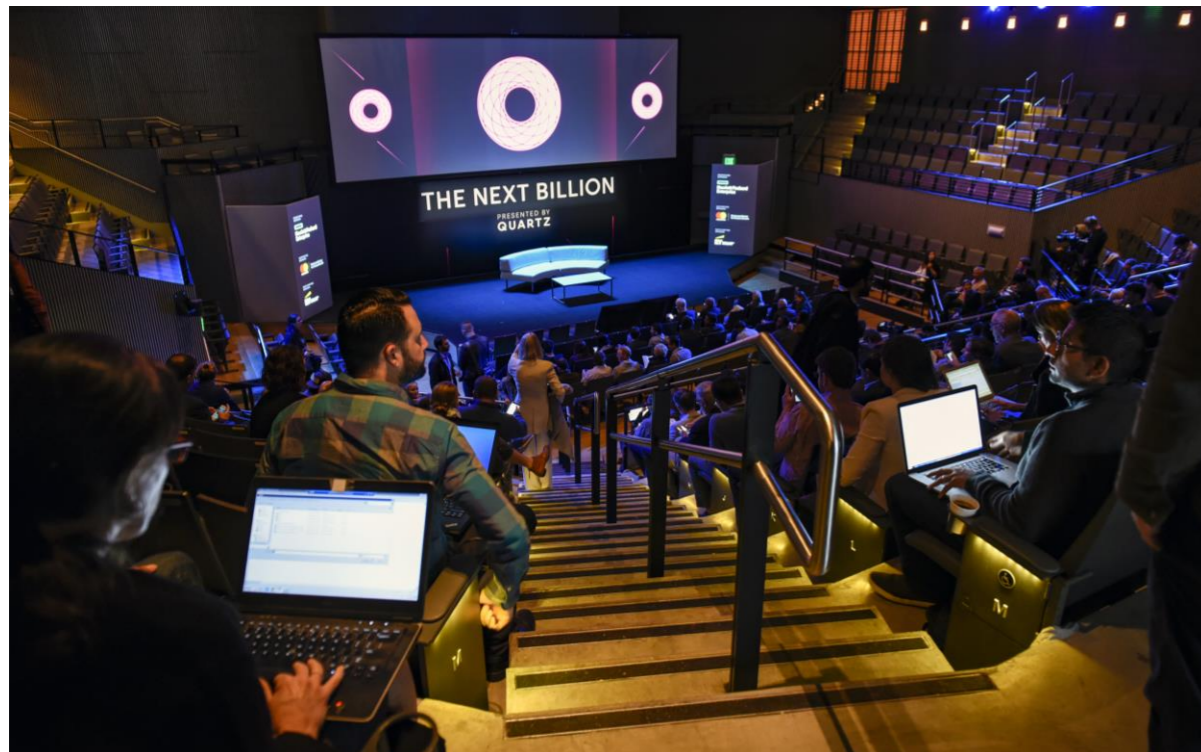
# STREAMING/RECORDING



SFJAZZ is the perfect turnkey solution to bring your concert, conference, or other special event to an audience anywhere in the world.

SFJAZZ has broadcast quality audio and video recording equipment, and a dedicated, experienced staff to bring your event to the world virtually.

We can record your event in any number of formats, and live-stream via Facebook, YouTube, or on a platform that you provide.



# FOOD & BEVERAGE

The approved caterers who are permitted to work onsite at SFJAZZ are:

## **B-Side Restaurant and Bar Concessions**

[b-sidesf.com](http://b-sidesf.com)

## **Taste Catering and Event Planning**

[tastecatering.com](http://tastecatering.com)

## **Betty Zlatchin Catering & Events**

[bettyzlatchin.com](http://bettyzlatchin.com)

## **Foxtail Catering & Events**

[foxtailcatering.com](http://foxtailcatering.com)

## **Paula LeDuc Fine Catering & Events**

[paulaleduc.com](http://paulaleduc.com)

## **Radish**

[myradish.com](http://myradish.com)

## **Salt & Honey Catering + Events**

[saltandhoneycatering.com](http://saltandhoneycatering.com)

No other caterers are permitted to work onsite at SFJAZZ.



**B-SIDE**  
MUSIC • FOOD • COCKTAILS

## **B- SIDE RESTAURANT**

**TASTY, APPROACHABLE, SIMPLE**

Located at street level and adjacent to the SFJAZZ First Floor Lobby, B-Side is a full service restaurant and bar complete with floor-to-ceiling windows. The glass wall between the First Floor Lobby and B-Side can be opened to make one larger space.

## **SUGGESTED USE:**

Receptions, Dinners, Overflow Seating,  
Breakout Sessions, 1:1s  
SQUARE FOOTAGE: 1,050

## **SEATED:**

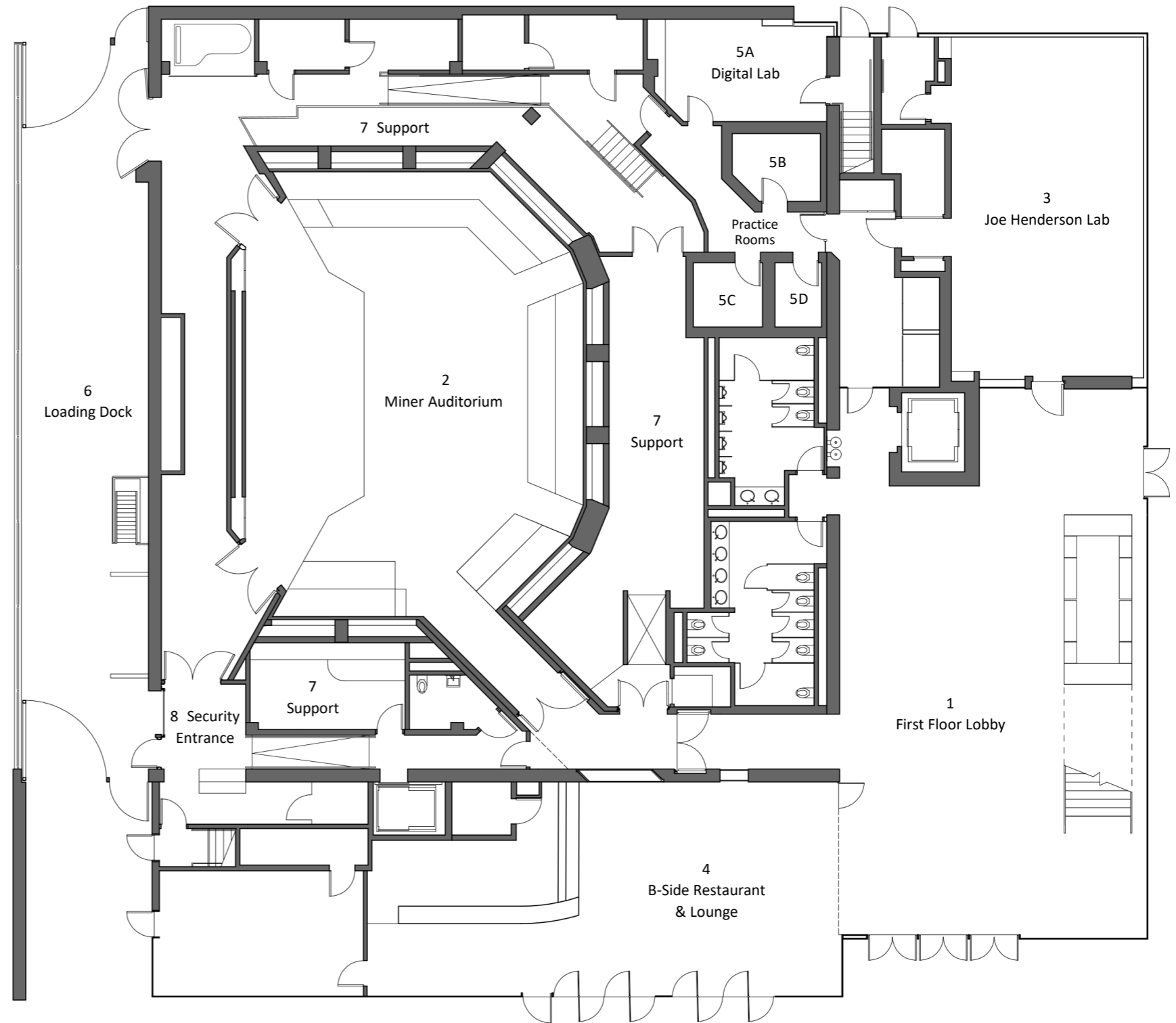
60

## **STANDING:**

100

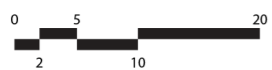
For private events hosted in the SFJAZZ Center, B-Side offers concession bar service packages in an unlimited open bar format. Custom AV options in B-Side provided by SFJAZZ.

# FIRST FLOOR PLAN

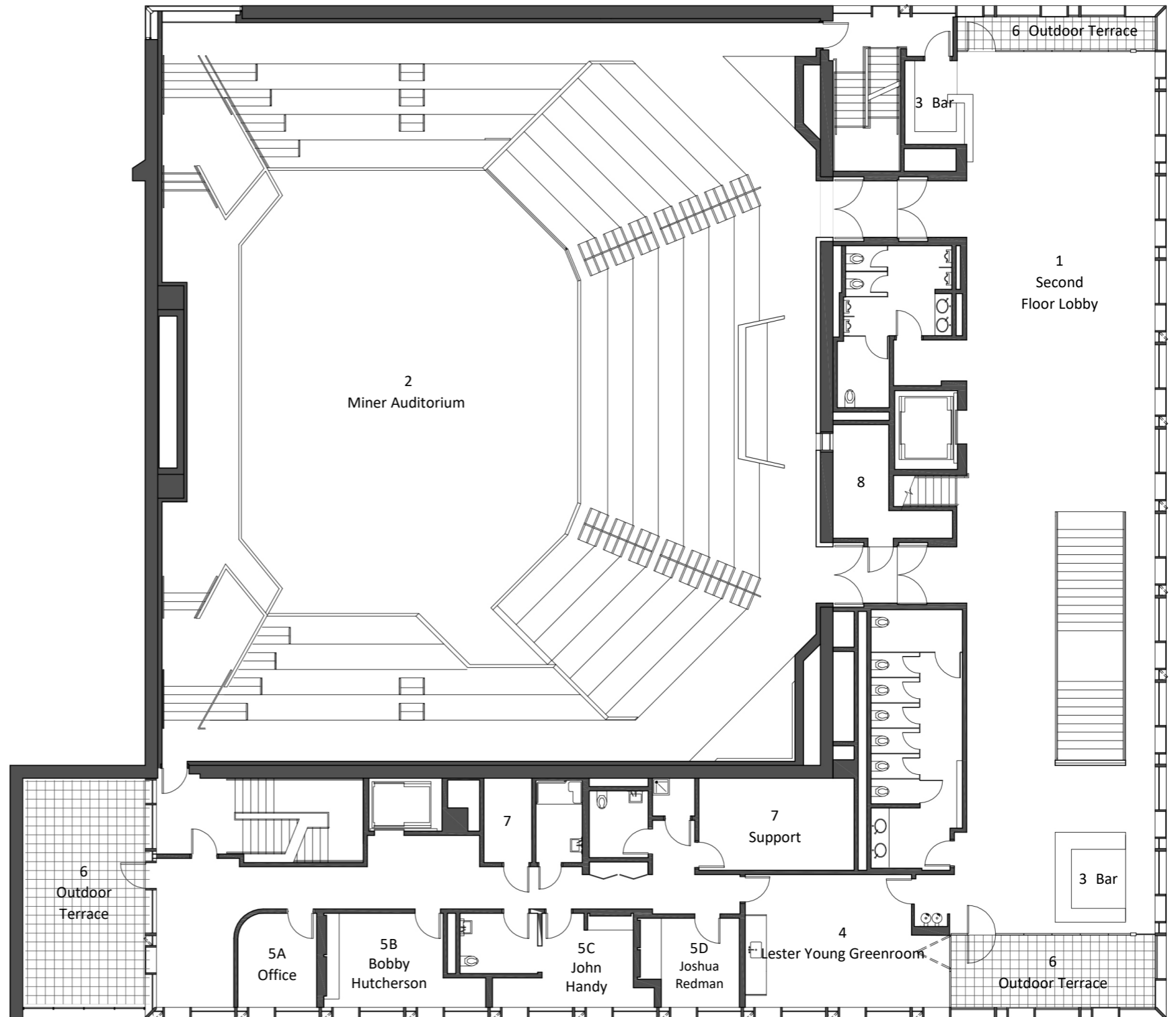


## LEGEND

- 1 First Floor Lobby
- 2 Miner Auditorium
- 3 Joe Henderson Lab
- 4 B-Side Restaurant & Lounge
- 5 Education Suite
- 6 Loading Dock
- 7 Support
- 8 Security Entrance

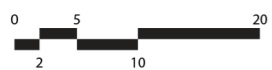


# SECOND FLOOR PLAN

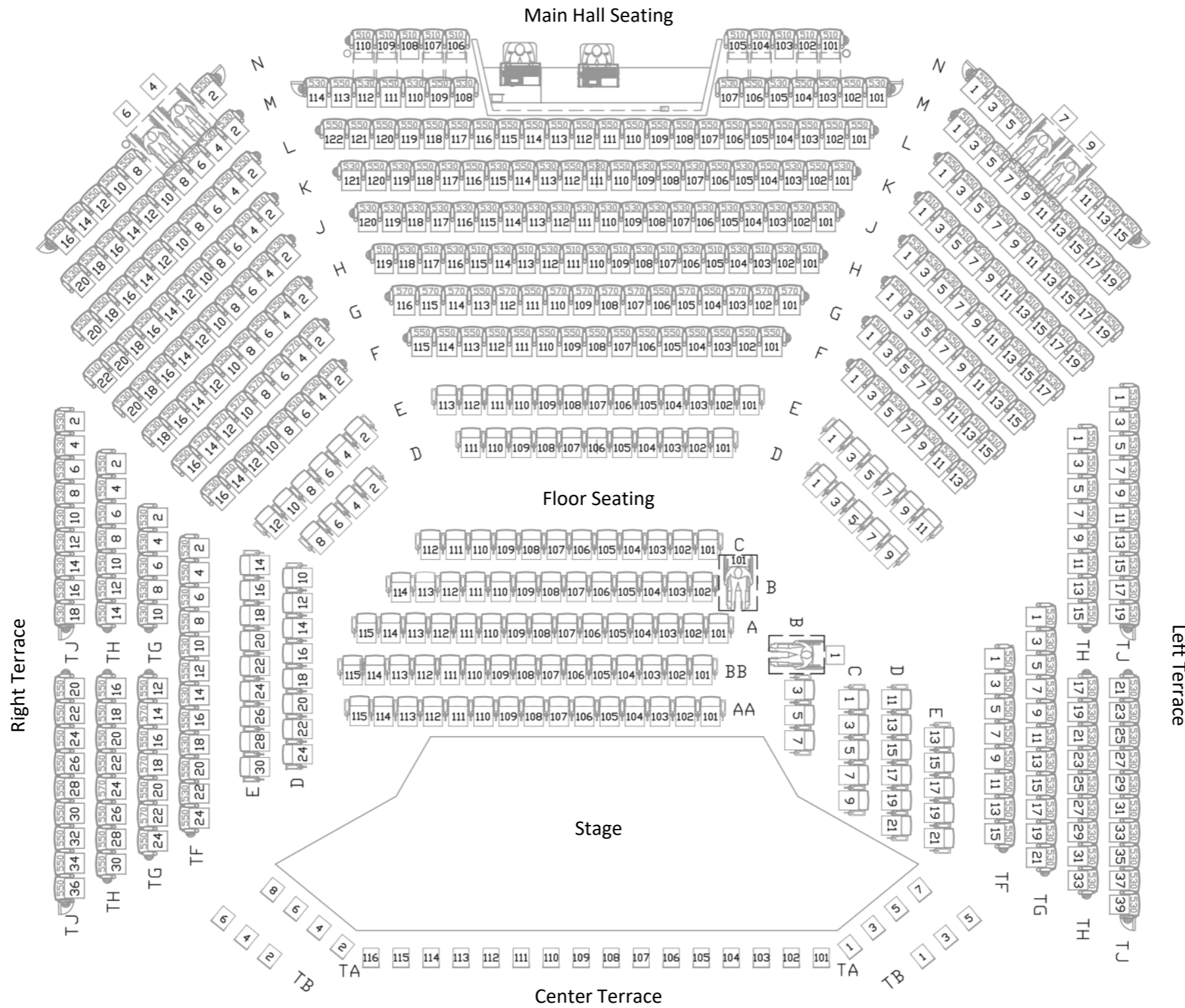


## LEGEND

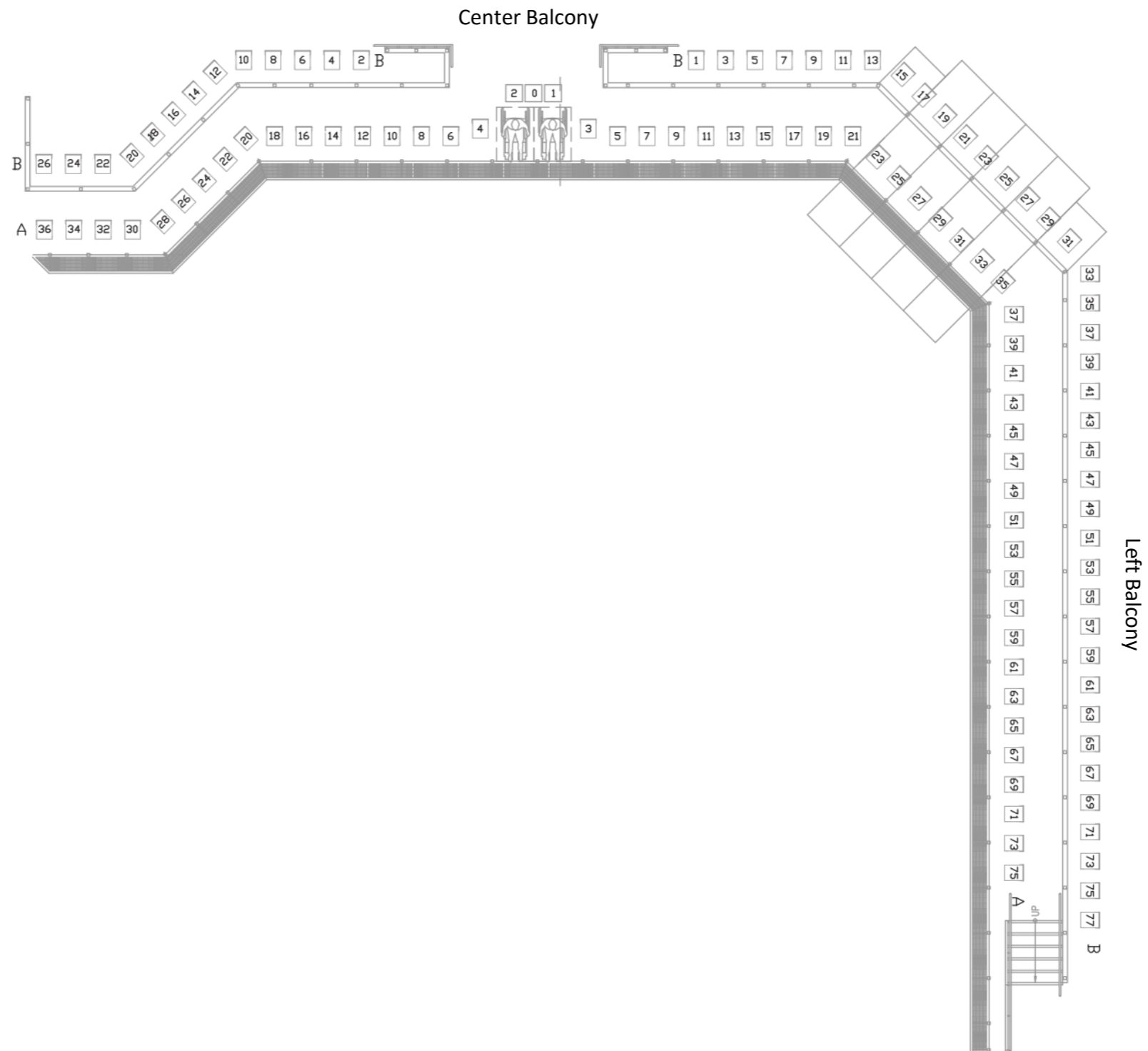
- 1 Second Floor Lobby
- 2 Miner Auditorium
- 3 Bars
- 4 Green Room
- 5 Dressing Rooms
- 6 Outdoor Terrace
- 7 Support
- 8 Projection Room



# MINER AUDITORIUM SEATING CHART



# MINER AUDITORIUM SEATING CHART - BALCONY



# TECHNICAL SPECIFICATIONS

## MINER AUDITORIUM

### STAGING

The Miner Auditorium has a fixed thrust stage, with no proscenium or wings. The stage is 14'D x 24'W x 18"H. Additional stage decking can be added to create larger stage configurations, pending SFJAZZ approval. All dimensions below indicate a width measured at the downstage edge. The upstage width is 34'.

Stage 1 Size: 17'D x 24'W

Stage 1 w/ Plugs: 17'D x 30'W or 17'D x 36'W

Stage 2 Size: 20'D x 24'W

Stage 2 w/ Plugs: 20'D x 30'W or 20'D x 36'W

Stage 5 Size: 29'D x 12'W

*A request for a stage size not listed above should be discussed with the Rentals team.*

Risers (Wenger, black): (2) 3' x 6', (4) 4' x 8'

Riser Leg heights: 8", 16", 24" or 36"

### AUDIO

#### Sound System:

- (32) Meyer Mina Line Array (16 cabinets per side)
- (5) Meyer 500-HP Subs, flown
- Meyer JM-1P, flown (5 HL and 3 HR – house is asymmetrical)
- (4) Meyer M1D front fills
- (2) Meyer UPJ-1P rear fills

#### Stage Monitors:

- (8) L'Acoustics 112p
- (8) L'Acoustics 108p

#### Consoles:

- FOH Yamaha Rivage PM5
- MON: AVID SC-48
- Whirlwind 64-channel, 4-way Lundahl transformer split (Locations: FOH, MON, ProTools, Truck Patch in alley)
- Tascam Recorders

*Microphone list available upon request.*

### COMMUNICATION

- Clear-Com Encore System
- Freespeak II Wireless system
- Listen Technology Assisted Listening System (Patrons)

# TECHNICAL SPECIFICATIONS

## MINER AUDITORIUM, CONTINUED

### VIDEO

#### Projection:

- Projector: Panasonic PT-MZ16KL ( 16,000ANSI Lumens)
- Permanent Screen: Stewart 24' x 13'6" front projection screen positioned 14' downstage of the upstage wall
- Projection screen: AV Stumpfl Monoblox 64 - 22' x 12.5'
- Back wall, fabric: 19'6" x 10' projection image area

#### Presentation Switching:

- BMD ATEM 1 M/E Constellation
- Apple Mac Mini M1

#### Cameras:

- (3) Panasonic AW-UE150
- (6) Black Magic Micro Studio 4K Cameras w/ assorted wide angle lenses
- (1) Sony PXW-FS5 Camera w/ Canon EF 24-70mm f/2.8 lens w/ Metabones T-speed booster

### RECORDING/STREAMING

#### Switching:

- For.A HVS-490 Switcher
- Panasonic AW-RP150 Camera Controller

#### Media Storage:

- (2) AJA Ki Pro Ultra Plus
- (1) AJA Ki Pro Rack

#### Audio:

- SSL System T – S300
- Recording capability: 64 channels @ 96kHz



#### Lighting:

The auditorium lighting rig is controlled by a GrandMA2 Light console, located in the FOH position. The lighting plot consists of:

- ETC source 4 fixtures (750w) w/ assorted barrels
- (5) Clay Paky Alpha Spot QWO 800 ST fixtures
- (12) Mac Aura fixtures

*Lighting plot paperwork is available upon request as a PDF or Vectorworks/Lightwright file.*





# TECHNICAL SPECIFICATIONS

## JOE HENDERSON LAB

### STAGE

The JHL stage does not have a proscenium, wings, or conventional backstage.

**Stage Dimensions:** 20' W x 9' D x 21" H

### AUDIO

#### Sound System:

- (2) Meyer UPJ-1P speakers
- (1) flown Meyer 500-HP sub

#### Stage Monitors:

- (4) QSC K10
- (8) L'Acoustics 108p (shared with Miner Auditorium)

FOH Console: Soundcraft Si Impact

*Microphone list available upon request.*

### VIDEO

#### Projection:

- Panasonic DZ570-WUXGA (4,000 lumens)
- Screen: 120" x 68" with 138" diagonal, front projection screen

### LIGHTING

The light plot consists of ETC Source Four PARnel fixtures controlled by Paradigm touch panels.

## LOBBIES

### AUDIO

Event/show program audio from Miner Auditorium or Joe Henderson Lab can be sent to the Lobby speakers on both floors.

### VIDEO

Two video monitors are located in the Second Floor Lobby at the entrances to the Miner Auditorium. These screens can display event/program video content.

*Specs are available upon request.*

## HIPERWALL (FIRST FLOOR LOBBY)

- (12) 46" Samsung displays w/ 1920x1080 resolution, configured in a 3 row, 4 column orientation with 6 displays per wall/side.
- Each wall/side has a total resolution of 3,840 x 3,240
- The Hiperwall supports iMag, streaming, and other video/image content.

*A content template and spec sheet is available upon request.*

# SFJAZZ BACKLINE

## DRUMS

### Yamaha Absolute Maple Custom Kit:

- 18" kick / 20" kick / 22" kick
- 12" rack tom
- 14" floor tom
- 14" snare - Yamaha Absolute Maple (wood) / 14" snare - Ludwig (metal)
- (1) HH stand
- (3) cymbal stands
- (1) bass drum pedal - Yamaha (single or double)
- (1) drum throne

## BASS / BASS AMPS

- (1) Aguilar 410 cabinet
- (1) Aguilar DB 751 head
- (1) Made in Germany (handcrafted) acoustic upright bass w/ adjustable bridge & Gage Realist pickup

*French and German bows available upon request.*

## GUITAR AMPS

- (1) Fender Deluxe Reverb
- (1) Fender HotRod Deluxe
- (2) Fender Twin

## PIANO

- Steinway D 9ft, A-440 (Miner)
- Yamaha CFX 9ft, A-440 (Miner)
- Yamaha DC6XEN PRO 7ft, A-440 (JHL)

## KEYBOARDS

- Nord Stage 3 (88 keys)
- Nord Electro (73 keys)
- Roland KC300 keyboard amp

## PERCUSSION

### Congas Set - LP Giovanni Hidalgo Palladium Series:

- (1) conga - 11 ¾"
- (1) quinto - 11"
- (1) tumba - 12 ½"
- (1) super tumba - 14"
- (4) LP conga cradle / stands

### Timbales Set - LP Tito Puente:

- (1) Tito Puente timbale 14"
- (1) Tito Puente timbale 13"
- (1) LP Tito Puente timbale stand w/ cowbell holder



# POWER

120v 20 amp circuits are available throughout all SFJAZZ spaces. In addition to the 20 amp circuits, there are additional tie-ins for use during events.

## LOCATIONS & INFO

### COMPANY SWITCHES

**Loading Dock:** 400 amp, 120/208 VAC, 3- $\emptyset$ , five-wire Cam-Lok connectors and lugs  
Loading Dock – North: 100 amp, 120/208 VAC, 3- $\emptyset$ , five-wire Cam-Lok connectors and lugs

*SFJAZZ does not provide a distro or feeder cable.*

**Stage Right:** 200 amp, 120/208 VAC, 3- $\emptyset$ , five-wire Cam-Lok connectors and lugs

Catwalk – House Right: 200 amp, 120/208 VAC, 3- $\emptyset$ , five-wire Cam-Lok connectors and lugs

Catwalk – Rear House Left: 200 amp, 120/208 VAC, 3- $\emptyset$ , five-wire Cam-Lok connectors and lugs

### SHORE POWER

**Linden Alley:** 50 amp, 120/208VAC, single-phase, Hubbell CS6369 twist-lock

**Loading Dock:** 50 amp, 120/208VAC, single-phase, Hubbell CS6369 twist-lock

**Fell Street:** 50 amp, 120/208VAC, single-phase, Hubbell CS6369 twist-lock

SFJAZZ has ONE shore power breakout cable that provides six 20A 120v circuits (12 standard outlets). Catering has first priority.



# INTERNET

Basic Wireless Access is provided as-is free of charge. The wireless network name is SFJAZZ. There is no password required to join this network. The speed of this network is constrained to give priority to our private wired and wireless networks.

**Standard Event Wireless Network:**

Available for rental clients to use for up to ten users. The wireless network name is SFJAZZ Rentals. The password will be given out one day prior to your event.

**Dedicated Wired Network Access:**

A dedicated private wired connection can be arranged for the duration of the event. This will suffice for an HD streaming application generally, to a third party stream provider like Livecast. We will activate up to four wired connections. Four weeks prior notice preferred.

**Custom Private Wireless/Wired Access:**

This service offers wireless and wired speeds up to 100Mb/s, with coverage in all indoor spaces, capable of handling events demanding large amounts of bandwidth and/or many wireless devices. We will set up an isolated wireless and wired network with your preferred wireless network name, and stay onsite for the duration of the event to assist with technical issues. Four weeks advance notice preferred.

*Price list available upon request and may be included in your proposal/contract.*



# LOAD-IN & PARKING



There is no complimentary vendor parking available at SFJAZZ. Reserved truck parking on surrounding streets can be permitted with a parking meter buy-out via SFMTA.

The SFJAZZ loading dock includes a driveway where cars and trucks may stop to unload. If available, trucks may stay onsite when approved. There is a roll-up door, from the driveway into the building near security, that should be used for all items. Load-in at other points of entry is possible with prior approval.

**The closest parking garage:**

**The Performing Arts Garage  
360 Grove Street  
(415) 252-8238**

# BOOKING PROCESS

## 1 INITIAL INQUIRY

Contact [rentals@sfjazz.org](mailto:rentals@sfjazz.org) to check availability of your dates. It is helpful to have a clear sense of your event and timeline. If your desired date is open you may place a hold while we confirm availability and provide a proposal.

If another party has a tentative hold on your date, you may challenge their hold. If they are not ready to sign a contract and pay a deposit and you are, then you will have the chance to book that date. It generally takes 24-48 hours for the client with the existing hold to confirm or release the date.

## 2 PROPOSAL

SFJAZZ will provide you with a proposal outlining the date, time, hours, location, and estimated rental fee for your event. We will need to know the name, title, address, email, and phone number for the person signing the contract. We will send you the proposal to review and if all terms are acceptable we can then send over the contract and invoice.

## 3 CONTRACT

To confirm your event date SFJAZZ will require a signed contract that can be returned by email or mail as well as payment of the 50% deposit. After these two items are received your event will be confirmed. The second payment will be due 30 days prior to your event date.

## 4 INSURANCE

No less than 30 days prior to your event date SFJAZZ requires your proof of insurance as outlined in your event contract.



## 5 FINALIZE DETAILS

30 days prior to your event date, you will need to confirm your timeline, AV requirements, and catering plans to the event manager. A walkthrough with all vendors will be required for larger events.

## 6 SETTLEMENT

A Final Settlement will be sent out after your event date, showing all rental fees, payments made, and any balance due. This process can take up to two weeks.

# SFJAZZ HIGH SCHOOL ALL-STARS

The SFJAZZ High School All-Stars can provide live music for rentals at SFJAZZ and this can be added to your event proposal.

A pre-professional training program for current Bay Area high school age jazz musicians. Comprised of two ensembles—the Big Band and the Combo—the All-Stars rehearse and perform throughout the school year at the SFJAZZ Center, receive mentorship and hold clinics with leading jazz professionals, record a professional studio album, and appear at prestigious music festivals and competitions.

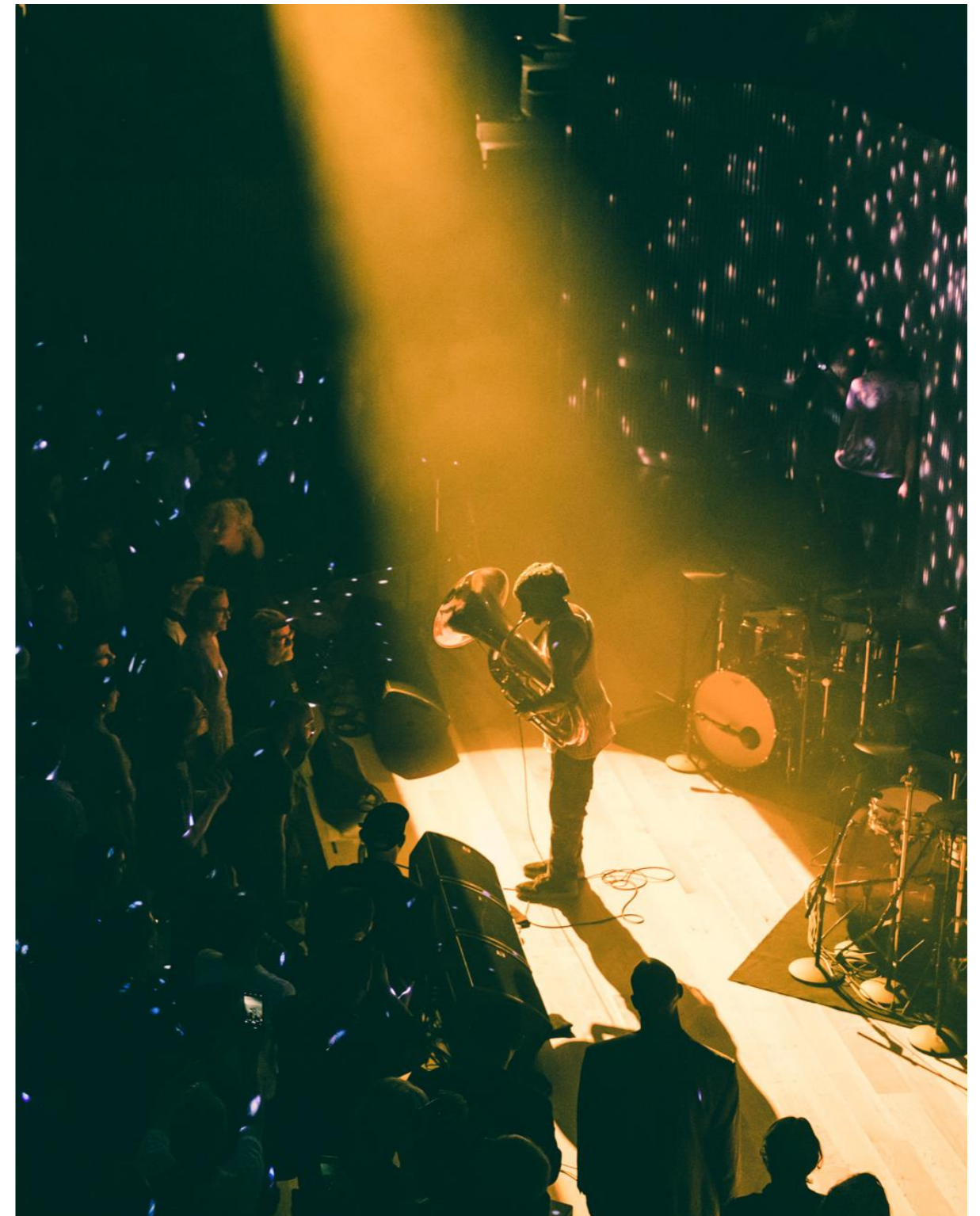
Structured in varying tiers, the HSAS community includes Alternates, Mentorship students, and Alumni, many of whom return to SFJAZZ as performers, mentors, and educators.





# FILM & PHOTOGRAPHY PRODUCTION LOCATION

SFJAZZ is an ideal venue for film and photography, having served many commercial clients. Commercial rates are available upon request and depend on scope of project and crew size.



# LOCATION

SFJAZZ Center is located at 201 Franklin St. (at the corner of Franklin and Fell streets) in San Francisco's Hayes Valley neighborhood. It is easily accessible from Muni Metro (Van Ness or Civic Center stations) and BART (Civic Center station).

# CONTACT

**BLANCA GARAY**

Senior Rental Account Manager, SFJAZZ

Bgaray@sfjazz.org



A photograph of a diverse crowd of people at a concert, captured in a blue-tinted, low-key lighting style. The audience members are shown in profile or three-quarter view, many with their hands raised in applause. The background is dark, with some faces and hands catching the blue light. The overall mood is one of collective joy and appreciation.

THANK YOU